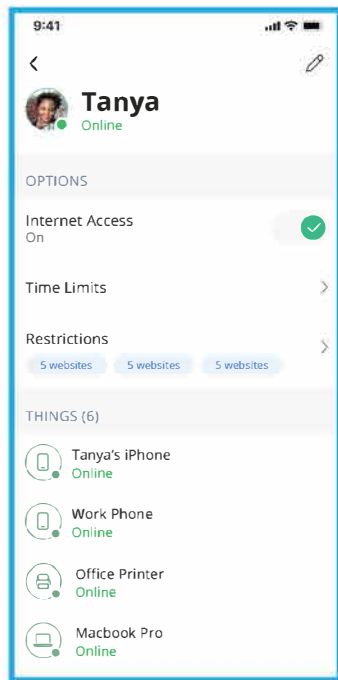


Set up Basic Parental Controls

- Click the People tile on the Home screen.
- Tap the "+" icon.
- Add a name (and photo, if desired).
- Check the box for any devices associated with that person.
- Click edit on the person's profile when devices need to be added later.
- Swipe the Internet Access toggle off to pause all devices connected to the profile.
- You can now set schedules to turn internet access off for all assigned devices during specific times as well as restrict apps and websites!



Update WiFi Network Name and Password

- Press "My Network" on the Home screen.
- Select the network you wish to update the name or password for.
- Press "Edit" and update your information.

Note: changing your SSID or password will require you to reconnect all your wireless devices previously connected to that network.

Run a Speed Test

- Select "My Network" from the Home screen.
- Select "Bandwidth Test".
- Select "Run Test".

The speed test will first run between the GigaSpire router and the Internet and then will conduct a speed test between any mesh units and the GigaSpire router. Results will show as a notification in the app and update on the

View Devices on Your Network

- Select "Things" from the Home screen.

Alerts

To view alerts, click the bell icon from the Home screen. To edit alerts settings, click on the setting icons in the top right of the Alerts screen or use the menu Settings: "Alerts".

Parental Controls

This powerful feature lets you manage screen time, content and access to website, and applications, all from the app. It also lets you prioritize which devices should get preferred connection so if you work from home and want to make sure you always have enough bandwidth, this feature is for you.



Control at your fingertips!

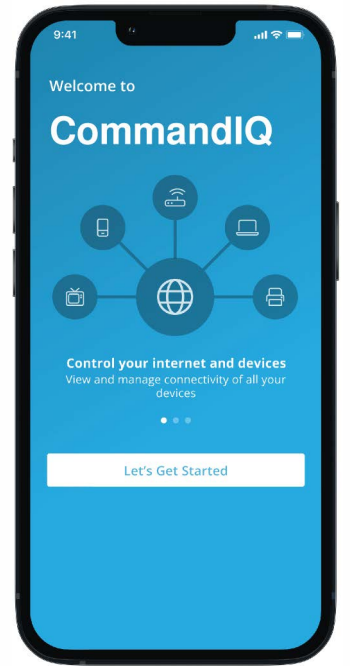
Superior Protection

As hackers become increasingly sophisticated, your network requires an equally innovative solution. Our features keep a lock on your network and alerts you when unwanted visitors, hackers, viruses, or malware try to visit. If it's connected, it's protected!



We take the worry out of WiFi!

Simple, easy to control, and worry-free



Worry Free WiFi

bluevalley.net
877.876.1228


bluevalley
TECHNOLOGIES

Setting up your WiFi System with the App

The app allows you to easily manage your home or small business Wi-Fi network within minutes. Download the app and take control of your Wi-Fi network today!

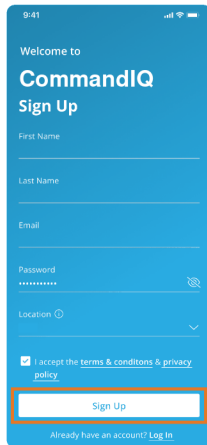
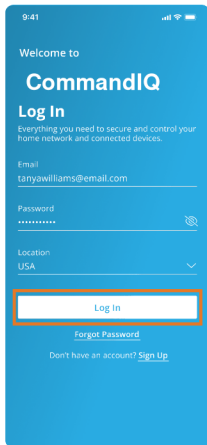
1

Download the app. You can search either the Apple App Store or Google Play Store for: 'CommandIQ®', then install it on your mobile device.



2

Select 'Sign Up' to set up your router to access Wi-Fi controls and protection.



Need help?

Contact support:
877.876.1228
csr@bluevalleyinc.net

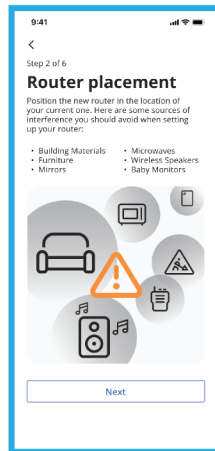
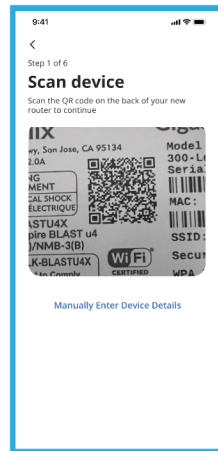
3

Select "Setup or Replace Router" to set up your new router model.

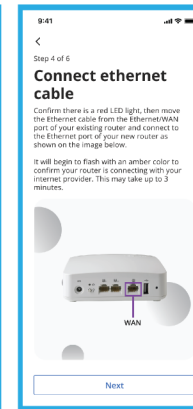
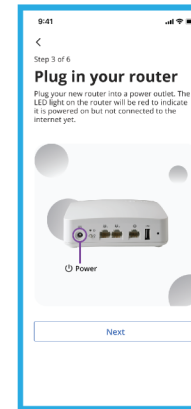


4

Follow the next steps for new router set up.

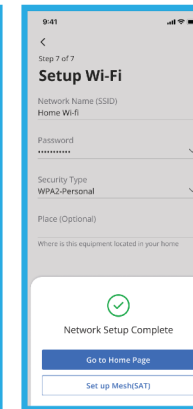
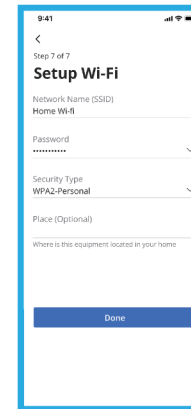


Note: Manually enter device details if scanning does not work.



5

Now that your new router is set up, you can set up your Wi-Fi network.



Get to know your new WiFi app!

Create a Guest Network

- Click on My Network from the Home screen.
- Click the "+" icon.
- Click "Add Network".
- Select "Guest" from Wireless Network Type dropdown.
- Create your network name.
- Select security type if desired.
- Create your password.
- If you have ExperienceIQ, you can set the duration of the network to endless or a custom amount of time.
- Share the network via QR code or text

